

Glass Containers

- One-way drinks bottles (for example, juice bottles, wine bottles)
- Glass bottles (for example, for edible oils, vinegar, bath additives)
- Screw top jars of all types (baby foods, gherkin jars, jam jars, mustard jars)
- Drinking glasses



Not allowed in here:

- Ceramics
- Porcelain
- Mirrors
- Sheet glass / window panes
- Screw caps / bottle caps

Return one-way and reusable deposit bottles and cans to the shop!

Metal Can Containers

All metal cans can also be put in the yellow sack.



The public waste baskets are there only for the waste generated when out and about !

Hazardous Waste



Products identified with these symbols can be handed in to the mobile hazardous waste unit:



Mobile hazardous waste unit dates can be found under this symbol in the waste removal calendar



Not hazardous waste are:

- Wall paints
- Firework bodies
- Gas bottles
- Energy-saving bulbs



Further information can be obtained here:

Internet: www.zaw-online.de
Waste advice, Tel. 06159 9160-144
E-mail: info@zaw-online.de
Bulk Waste Service Centre: 0800 9160600
Organic waste, paper, Tel. 06159 9160-117
Yellow sack, Tel. 06061 9600-0
Hazardous waste, Tel. 06159 9160-130
Building site waste, Tel. 06159 9160-123

Information in different languages:

English



Sort Waste Correctly

in the District of
Darmstadt-Dieburg



Zweckverband Abfall- und Wertstoffeinsammlung
für den Landkreis Darmstadt-Dieburg



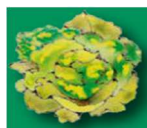
Residual Waste – Grey Bin

- Ashes (cold)
- Photographs
- Rubber
- Hygiene products (for example, cotton buds, condoms)
- Cat litter, small animal litter
- Miscellaneous, heavily soiled
- Vacuum cleaner bags
- Road sweepings
- Wallpaper residues
- Animal bedding
- Nappies
- Cigarette filters and ash



Organic Waste – Green Bin

- Bread leftovers
- Egg shells
- Filter bags
- Fish bones
- Meat leftovers (normal small household quantities)
- Vegetable leftovers (for example, onion skin, lettuce)
- Coffee grounds
- Milk and flour products
- Fruit peel (for example, nuts, oranges)
- Paper handkerchiefs
- Leftover food (normal small household quantities)
- Tea leaves and tea bags
- Branches and twigs (circumference < 15 cm)
- Flowers
- Garden waste (without soil)
- Leaves, weeds
- Plant and grass cuttings



Not allowed here:

- Soil
- Synthetic material (cups, bottles, foils)
- Plastic (also no "Bioplastics")
- Animal litter (of any kind)
- Kitchen waste from restaurants
- Treated wood
- Textiles
- Leather



Paper – Blue Bin

- Paper, cardboard, cartons (clean and dry)
- Egg boxes
- Cartons (folded or torn up)
- Catalogues
- Wrapping paper
- Brochures
- School exercise books
- Writing paper
- Telephone directories
- Magazines
- Newspapers



Not allowed here:

- Wallpaper



Yellow Sack

- Aluminium (for example, trays, foils, lids)
- Tins of all kinds
- Plastics, foamed (for example, trays for meat, vegetables or fruit)
- Plastic tubs (for example, for margarine, yogurt, buttermilk, dairy products)
- Plastic bottles (for example, for washing up, detergents and personal care products)
- Plastic films (for example, carrier bags, bags, cling film, wrapping films)
- Aerosol cans, fully emptied, that contained no harmful ingredients (for example, for cream, spray-on plaster, body sprays)
- Composite materials (for example, drinks cartons for milk, juices, vacuum packaging)
- Confectionary packaging, deep freeze packaging)



Not allowed here:

- Plastic crockery
- Toys
- Packaging with contents



Bulk waste-telephone 0800 9160600



- Bicycles
- Gardening tools
- Furniture (for example, tables, chairs, cupboards, mattresses, shelving units, etc.)
- Stoves or radiators that were not permanently installed (without oil)
- Lawnmowers (only with emptied tanks, not electric)
- Sports and games equipment

Not allowed as bulk waste:

- Vehicle parts (motor-driven)
- Refrigerators

Diffentiation of building site waste:

As a rule, bulk waste is everything that is taken with you when moving house.

Electrical scrap 0800 9160600

- Computers / tablets
- Televisions
- Cookers
- Hi-fi systems
- Coffee machines
- Refrigerators
- Monitors
- Electric shavers
- Toasters
- Washing machines and dishwashers
- Tumble-dryers
- Cordless screwdrivers
- Electric toothbrushes



Definition: As a rule, everything that has a plug, batteries or rechargeable batteries counts as electrical scrap.